

Panasonic Industrial Company

Air Conditioning Department

2P14S3R276A-1A

265/277 V, 60 Hz R-22

2P14S3R276A-1A

Application	Cooling (C) / Heating (H)	
Ref. Charge Limit (C/H)	24.0 oz.	680 g
	(C) 28.2 oz.	800 g
Evap. Temp. Range (C/H)	5°F to 53.6°F	-15°C to 12°C
	(C) 14°F to 53.6°F	-10°C to 12°C
Specification Number	SC-52170587-C	

Rated Performance @265V¹

Capacity	9,165 Btu/hr
Motor Input	845 Watts
Current	3.4 Amperes
E.E.R.	10.85 Btu/hr/ W

Compressor Data

Pump Type	Rotary	
Displacement	13.2 cc/rev	
Oil	ATMOS M60 or equivalent	
Oil Charge (Precharged)	9.1 fl. oz.	270 cc
Net Weight	26.5 lb	12.0 kg

Motor Data

Motor Type	Permanent Split Capacitor	
Locked Rotor Amperes	23 A at 277 V	
Winding Resistance	Main: 3.914Ω, Aux: 2.503Ω	
Max. Continuous Current ²		

Maximum Operating Conditions

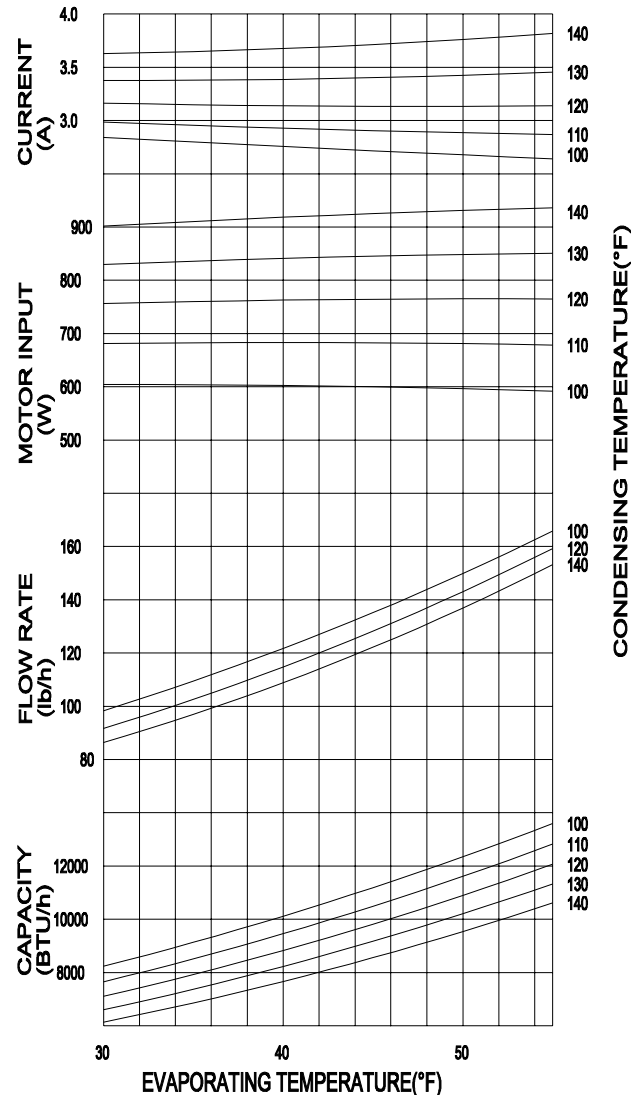
Condensing Temp.	149°F	65°C
Return Gas Temp.	95°F	35°C
Discharge Gas Temp.	239°F	115°C
Motor Wire Temp.	266°F	130°C

Electrical Components

Overload Protector	7100504, 7100523, 7100682	
Texas Instrument part #	MRA98852, MRA98967, MRA99209	
Run Capacitor	25 μF/370 VAC	

¹Rated @ASHRAE/T Conditions

Evaporating Temp.	45°F	7.2°C
Condensing Temp.	130°F	54.4°C
Return Gas Temp.	95°F	35.0°C
Liquid Temp.	115°F	46.1°C
Ambient Temp.	95°F	35.0°C



Performance Data @265V

Based on:

Return gas Temp.	95°F	35.0°C
Liquid sub-cooling	15°F	8.3°C
Ambient	95°F	35.0°C

COND. TEMP.

100°F	110°F	120°F	130°F	140°F
37.8°C	43.3°C	48.9°C	54.4°C	60°C

EVAP. TEMP.

35° F	Btu/hr	9125	8505	7915	7365	6850
	Watts	605	680	760	835	910
	Amperes	2.8	2.9	3.1	3.4	3.6

45° F	Btu/hr	11180	10480	9810	9165	8550
	Watts	600	680	765	845	925
	Amperes	2.7	2.9	3.1	3.4	3.7

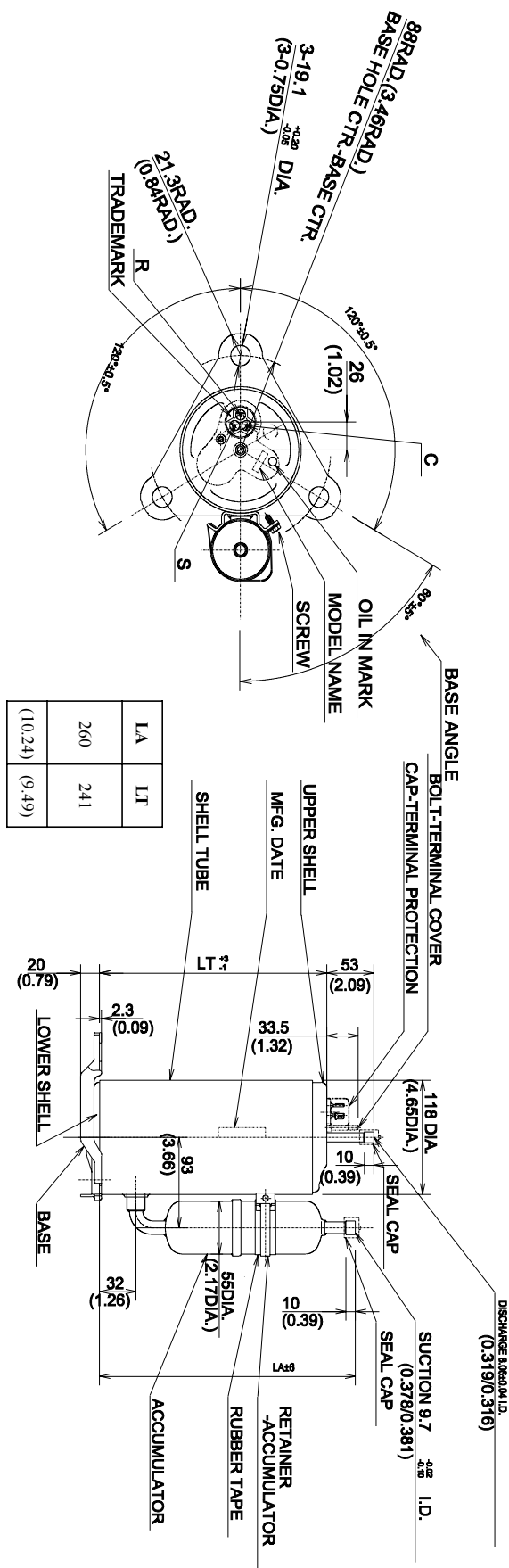
55° F	Btu/hr	13590	12815	12060	11325	10610
	Watts	590	680	765	850	935
	Amperes	2.6	2.9	3.4	3.4	3.8

BTU 9,000

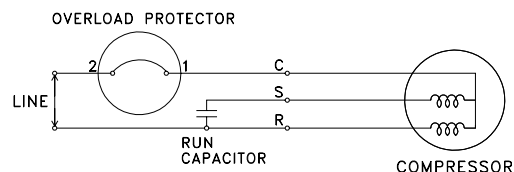
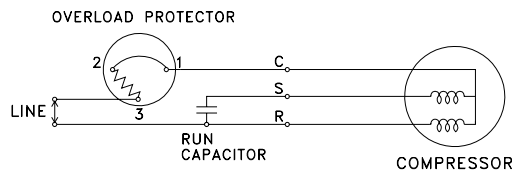
2P14S3R276A-1A

265/277 V, 60 Hz R-22

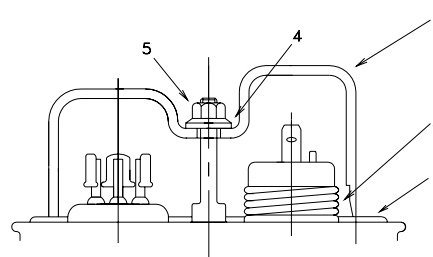
BTU 9,000



WIRING DIAGRAM



COMPRESSOR ACCESSORIES



Accessories	Part Number
1 Gasket-Terminal Cover	7070620U
2 Spring-OLP hold down	7041200
3 Terminal Cover	7070219U
4 Gasket-Nut	7070621U
5 Nut-Terminal Cover	7080300
Grommet	7070815

COMPRESSOR MOUNTING

