

Panasonic Industrial Company

Air Conditioning Department

2P15S126B-1K

115 V, 60 Hz R-22

2P15S126B-1K

Application	Cooling (C) / Heating (H)	
Ref. Charge Limit (C/H)	24.0 oz.	680g
	(C) 28.2 oz.	800 g
Evap. Temp. Range(C/H)	5°F to 53.6°F	-15°C to 12°C
	(C) 14°F to 53.6°F	-10°C to 12°C
Specification Number	SC-52171698-A	

Rated Performance¹

Capacity	10,120 Btu/hr
Motor Input	950 Watts
Current	8.30 Amperes
E.E.R.	10.65 Btu/hr/ W

Compressor Data

Pump Type	Rotary	
Displacement	14.70 cc/rev	
Oil	ATMOS M60 or equivalent	
Oil Charge (Precharged)	9.1 fl. oz.	270 cc
Net Weight	25.4 lb	11.5 kg

Motor Data

Motor Type	Permanent Split Capacitor	
Locked Rotor Amperes	53 A at 120 V	
Winding Resistance	Main: 0.698Ω, Aux: 2.261Ω	
Max. Continuous Current ²		

Maximum Operating Conditions

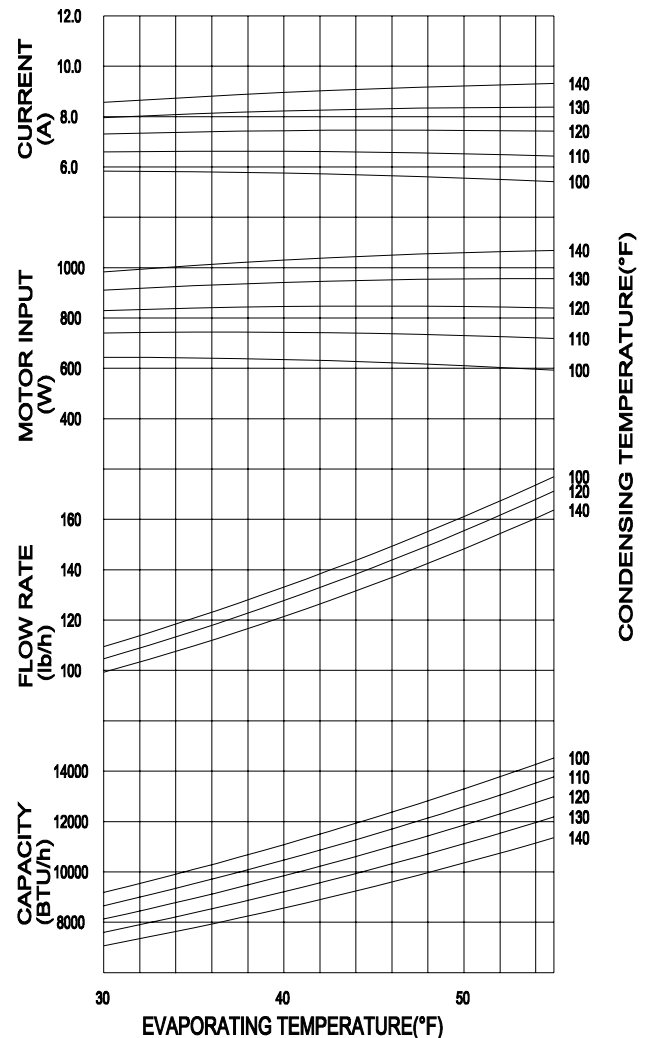
Condensing Temp.	149°F	65°C
Return Gas Temp.	95°F	35°C
Discharge Gas Temp.	239°F	115°C
Motor Wire Temp.	266°F	130°C

Electrical Components

Overload Protector	7100032	
Texas Instrument part #	MRA98695	
Run Capacitor	40 μF/250 VAC	

¹Rated @ ASHRAE/T Conditions

Evaporating Temp.	45°F	7.2°C
Condensing Temp.	130°F	54.4°C
Return Gas Temp.	95°F	35.0°C
Liquid Temp.	115°F	46.1°C
Ambient Temp.	95°F	35.0°C



Performance Data

Based on:

Return gas Temp.	95°F	35.0°C
Liquid sub-cooling	15°F	8.3°C
Ambient	95°F	35.0°C

COND. TEMP.

100°F	110°F	120°F	130°F	140°F
37.8°C	43.3°C	48.9°C	54.4°C	60°C

EVAP. TEMP.

35° F 1.7°C	Btu/hr	10090	9500	8945	8365	7780
	Watts	640	745	840	925	1010
	Amperes	5.8	6.6	7.4	8.1	8.8

45° F 7.2°C	Btu/hr	12145	11550	10810	10120	9415
	Watts	625	740	845	950	1045
	Amperes	5.7	6.6	7.5	8.3	9.1

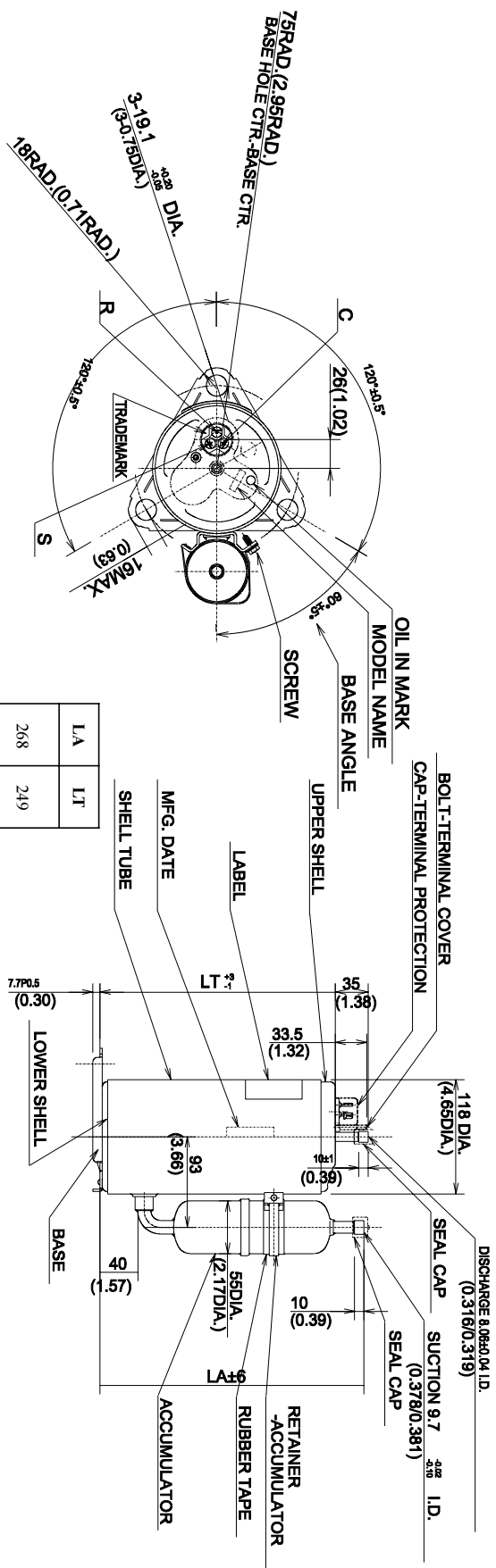
55° F 12.8°C	Btu/hr	14520	13765	12985	12180	11350
	Watts	590	715	840	955	1070
	Amperes	5.4	6.4	7.4	8.4	9.3

BTU 10,000

2P15S126B-1K

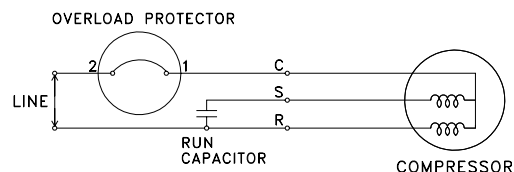
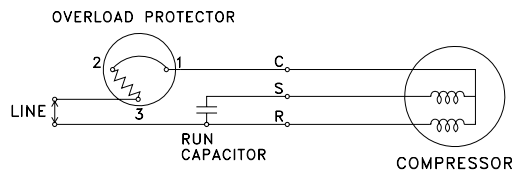
115 V, 60 Hz R-22

BTU 10,000

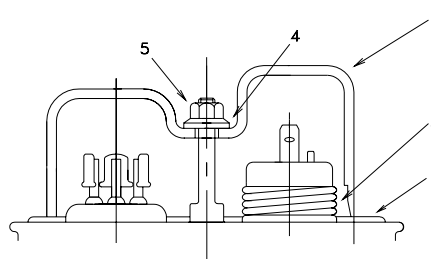


LA	LT
268	249
(10.55)	(9.80)

WIRING DIAGRAM

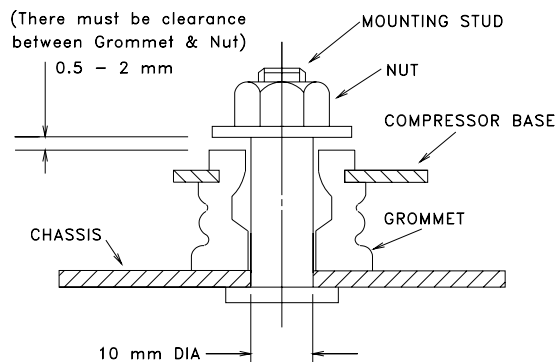


COMPRESSOR ACCESSORIES



Accessories	Part Number
1 Gasket-Terminal Cover	7070620U
2 Spring-OLP hold down	7041200
3 Terminal Cover	7070219U
4 Gasket-Nut	7070621U
5 Nut-Terminal Cover	7080300
Grommet	7070815

COMPRESSOR MOUNTING



This document sets forth certain operational parameters and conditions for operation of this product. If this product is operated outside of the parameters and conditions stated herein, buyer assumes sole and full responsibility and shall indemnify seller with respect to all product failures, and all consequences thereof. Operation of the product outside of the parameters and conditions specified herein shall serve to invalidate all seller warranties, if any, with respect to the product. Use this document as reference only. For specifications, please contact Panasonic's engineering department.