

Panasonic Industrial Company

Air Conditioning Department

2R10U126B-6A

115 V, 60 Hz R-22

2R10U126B-6A

Application	Cooling (C) / Heating (H)	
Ref. Charge Limit (C/H)	16.4 oz.	465 g
	(C) 19.4 oz.	550 g
Evap. Temp. Range (C/H)	5°F to 53.6°F	-15°C to 12°C
	(C) 14°F to 53.6°F	-10°C to 12°C
Specification Number	SC-52171704-A	

Rated Performance¹

Capacity	6,745 Btu/hr
Motor Input	615 Watts
Current	5.6 Amperes
E.E.R.	10.97 Btu/hr/ W

Compressor Data

Pump Type	Rotary	
Displacement	9.5 cc/rev	
Oil	ATMOS M60 or equivalent	
Oil Charge (Precharged)	8.8 fl. oz.	260 cc
Net Weight	19.8 lb	9.0 kg

Motor Data

Motor Type	Permanent Split Capacitor	
Locked Rotor Amperes	40 A at 120 V	
Winding Resistance	Main: 1.130Ω, Aux: 2.712Ω	
Max. Continuous Current ²		

Maximum Operating Conditions

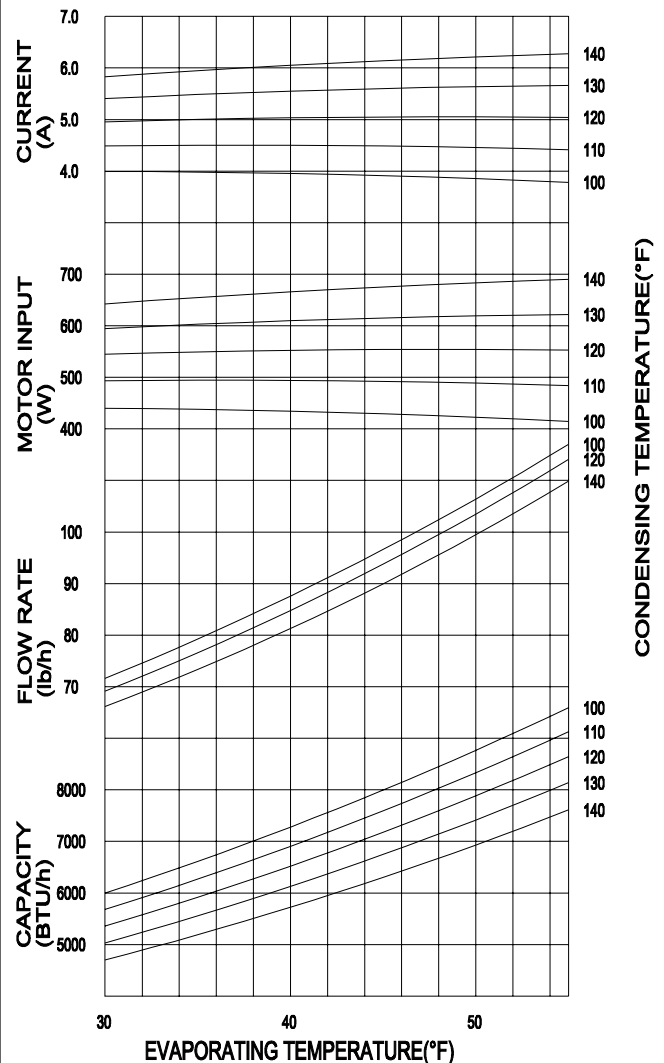
Condensing Temp.	149°F	65°C
Return Gas Temp.	95°F	35°C
Discharge Gas Temp.	239°F	115°C
Motor Wire Temp.	266°F	130°C

Electrical Components

Overload Protector	7100533 or 7100512	
Texas Instrument part #	MRA98916 or MRA98866-9201	
Run Capacitor	35 μF/250 VAC	

¹Rated @ ASHRAE/T Conditions

Evaporating Temp.	45°F	7.2°C
Condensing Temp.	130°F	54.4°C
Return Gas Temp.	95°F	35.0°C
Liquid Temp.	115°F	46.1°C
Ambient Temp.	95°F	35.0°C



Performance Data

Based on:

Return gas Temp.	95°F	35.0°C
Liquid sub-cooling	15°F	8.3°C
Ambient	95°F	35.0°C

COND. TEMP.

100°F	110°F	120°F	130°F	140°F
37.8°C	43.3°C	48.9°C	54.4°C	60°C

EVAP. TEMP.

35° F 1.7°C	Btu/hr	6610	6265	5915	5555	5185
	Watts	440	495	550	605	655
	Amperes	4.0	4.5	5.0	5.5	5.9

45° F 7.2°C	Btu/hr	7995	7590	7175	6745	6300
	Watts	430	490	555	615	675
	Amperes	3.9	4.5	5.0	5.6	6.1

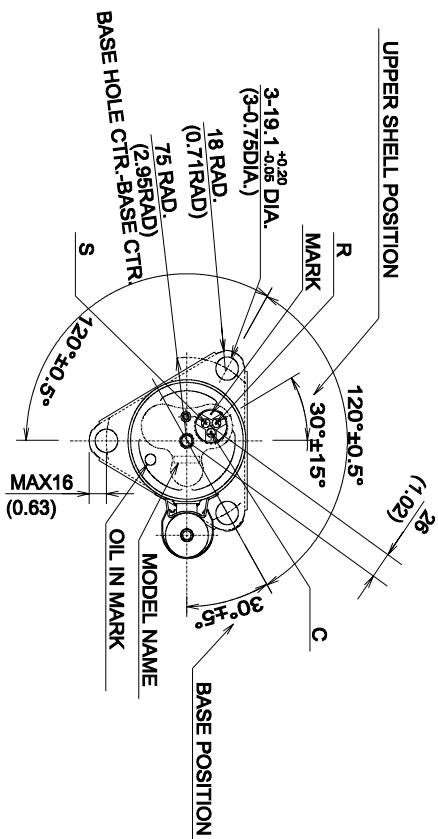
55° F 12.8°C	Btu/hr	9590	9125	8640	8135	7605
	Watts	415	485	555	620	690
	Amperes	3.8	4.4	5.0	5.7	6.3

BTU 7,000

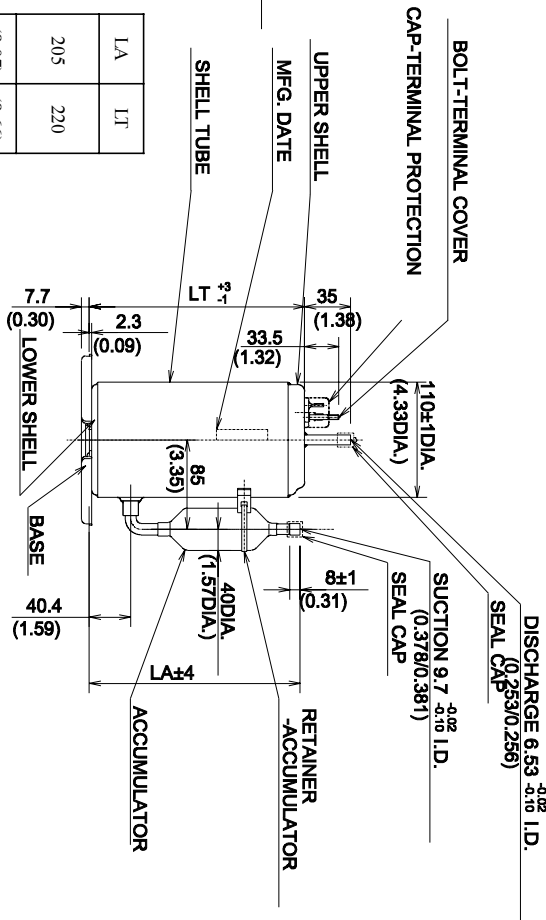
2R10U126B-6A

115 V, 60 Hz R-22

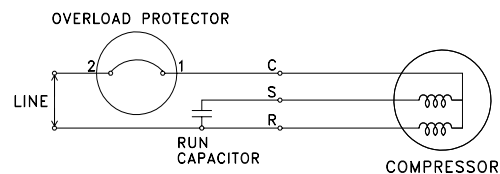
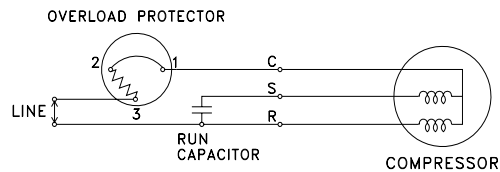
BTU 7,000



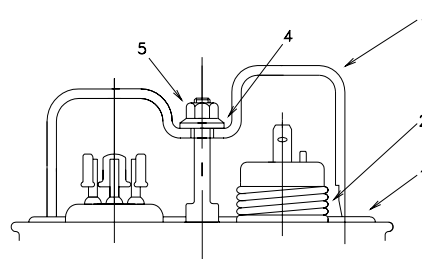
LA	LT
205	220
(8.07)	(8.66)



WIRING DIAGRAM



COMPRESSOR ACCESSORIES



Accessories	Part Number
-------------	-------------

1	Gasket-Terminal Cover	7070620U
2	Spring-OLP hold down	7041200
3	Terminal Cover	7070222U
4	Gasket-Nut	7070621U
5	Nut-Terminal Cover	7080300
	Grommet	7070817

COMPRESSOR MOUNTING

