

Panasonic Industrial Company

Air Conditioning Department

2R10S3R276A-6A

220/240 V, 50 Hz R-22

2R10S3R276A-6A

Application	Cooling (C) / Heating (H)	
Ref. Charge Limit (C/H)	16.4 oz.	465 g
	(C)	19.4 oz.
		550 g
Evap. Temp. Range (C/H)	5°F to 53.6°F	-15°C to 12°C
	(C)	14°F to 53.6°F
		-10°C to 12°C
Specification Number	SC-52170821-B(2)	

Rated Performance @220V/240V¹

Capacity	5,415/5,455 Btu/hr
Motor Input	510/525 Watts
Current	2.35/2.25 Amperes
E.E.R.	10.62/10.39 Btu/hr/ W

Compressor Data

Pump Type	Rotary	
Displacement	9.5 cc/rev	
Oil	ATMOS M60 or equivalent	
Oil Charge (Precharged)	8.8 fl. oz.	260 cc
Net Weight	19.2 lb	8.7 kg

Motor Data

Motor Type	Permanent Split Capacitor	
Locked Rotor Amperes	10/11 A at 220/240 V	
Winding Resistance	Main: 5.525Ω, Aux: 5.250Ω	
Max. Continuous Current ²		

Maximum Operating Conditions

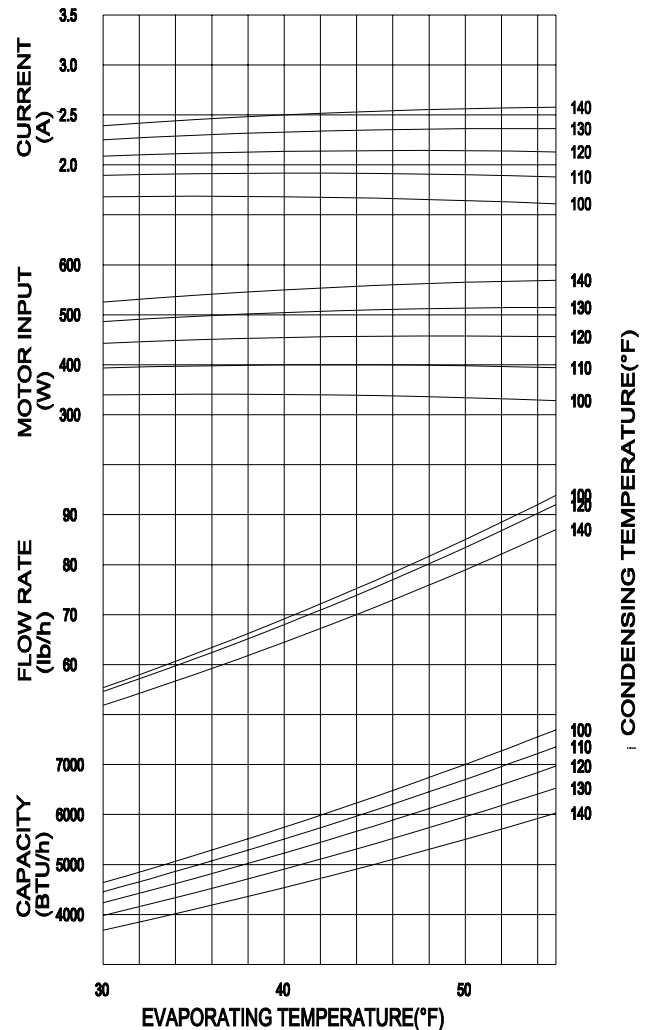
Condensing Temp.	149°F	65°C
Return Gas Temp.	95°F	35°C
Discharge Gas Temp.	239°F	115°C
Motor Wire Temp.	266°F	130°C

Electrical Components

Overload Protector	7100543
Texas Instrument part #	MRA 99017
Run Capacitor	20 μF/370 VAC

¹Rated @ASHRAE/T Conditions

Evaporating Temp.	45°F	7.2°C
Condensing Temp.	130°F	54.4°C
Return Gas Temp.	95°F	35.0°C
Liquid Temp.	115°F	46.1°C
Ambient Temp.	95°F	35.0°C



Performance Data @ 220V

Based on:

Return gas Temp.	95°F	35.0°C
Liquid sub-cooling	15°F	8.3°C
Ambient	95°F	35.0°C

COND. TEMP.

100°F	110°F	120°F	130°F	140°F
-------	-------	-------	-------	-------

EVAP. TEMP.

35° F	Btu/hr	5175	4965	4715	4430	4100
	Watts	340	400	450	495	540
	Amperes	1.7	1.9	2.1	2.3	2.5

45° F	Btu/hr	6355	6085	5775	5415	5005
	Watts	340	400	455	510	560
	Amperes	1.7	1.9	2.1	2.4	2.5

55° F	Btu/hr	7695	7355	6970	6525	6025
	Watts	330	395	455	515	570
	Amperes	1.6	1.9	2.1	2.4	2.6

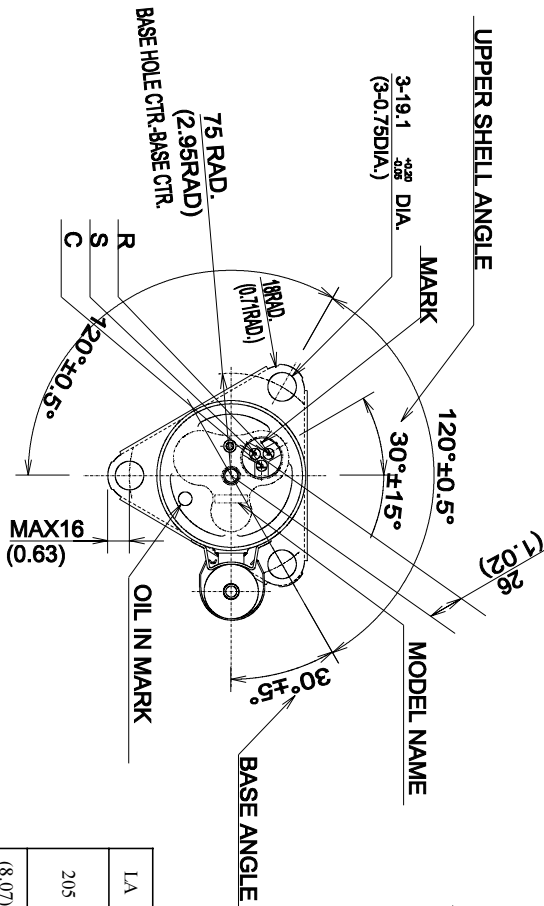
BTU 5,000

²Contact Panasonic for value.

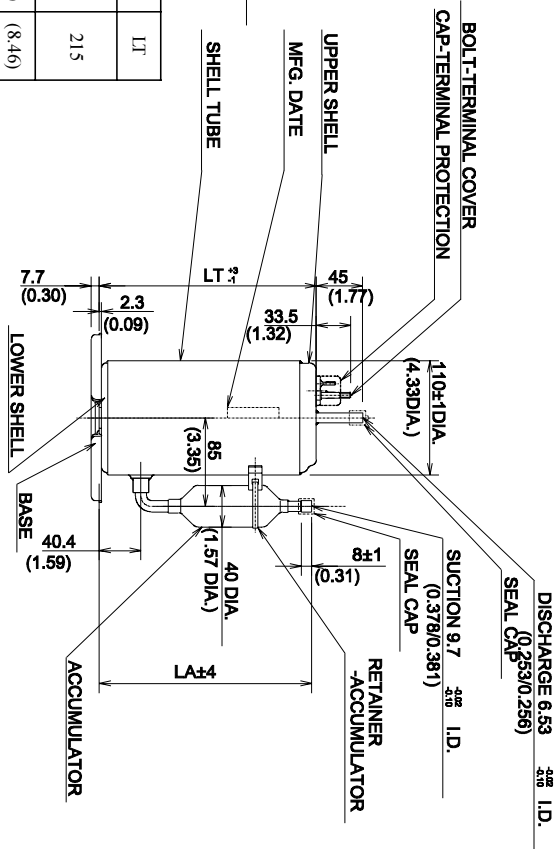
2R10S3R276A-6A

220/240 V, 50 Hz R-22

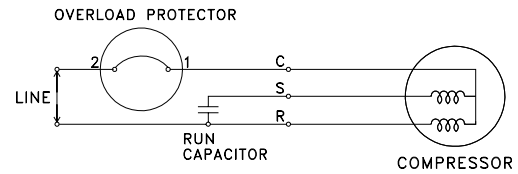
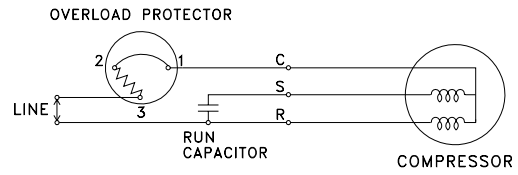
BTU 5,000



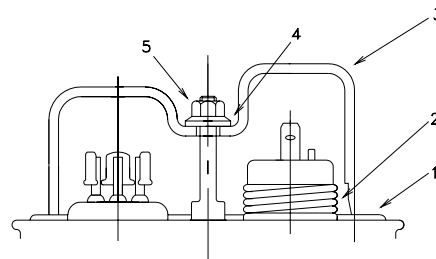
LA	LT
205 (8.07)	215 (8.46)



WIRING DIAGRAM

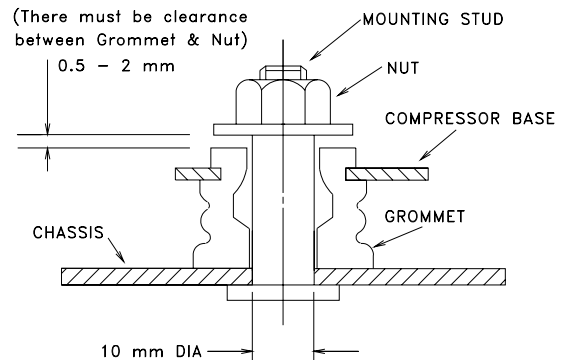


COMPRESSOR ACCESSORIES



Accessories	Part Number
1 Gasket-Terminal Cover	7070620U
2 Spring-OLP hold down	7041200
3 Terminal Cover	7070222U
4 Gasket-Nut	7070621U
5 Nut-Terminal Cover	7080300
Grommet	7070817

COMPRESSOR MOUNTING



This document sets forth certain operational parameters and conditions for operation of this product. If this product is operated outside of the parameters and conditions stated herein, buyer assumes sole and full responsibility and shall indemnify seller with respect to all product failures, and all consequences thereof. Operation of the product outside of the parameters and conditions specified herein shall serve to invalidate all seller warranties, if any, with respect to the product. Use this document as reference only. For specifications, please contact Panasonic's engineering department.