

### 2R11S3R236A-6A

Application	Cooling(C) / Heating (H)	
Ref. Charge Limit (C/H)	16.4 oz.	465 g
	(C)	19.4 oz. 550 g
Evap. Temp. Range (C/H)	5°F to 53.6°F	-15°C to 12°C
	(C)	14°F to 53.6°F -10°C to 12°C
Specification Number	SC-52170825-A	

### Rated Performance @230V<sup>1</sup>

Capacity	7,160 Btu/hr
Motor Input	665 Watts
Current	3.0 Amperes
E.E.R.	10.77 Btu/hr/ W

### Compressor Data

Pump Type	Rotary	
Displacement	10.3 cc/rev	
Oil	ATMOS M60 or equivalent	
Oil Charge (Precharged)	8.8 fl. oz.	260 cc
Net Weight	19.2 lb	8.7 kg

### Motor Data

Motor Type	Permanent Split Capacitor	
Locked Rotor Amperes	19 A at 240 V	
Winding Resistance	Main: 4.093Ω, Aux: 5.584Ω	
Max. Continuous Current <sup>2</sup>		

### Maximum Operating Conditions

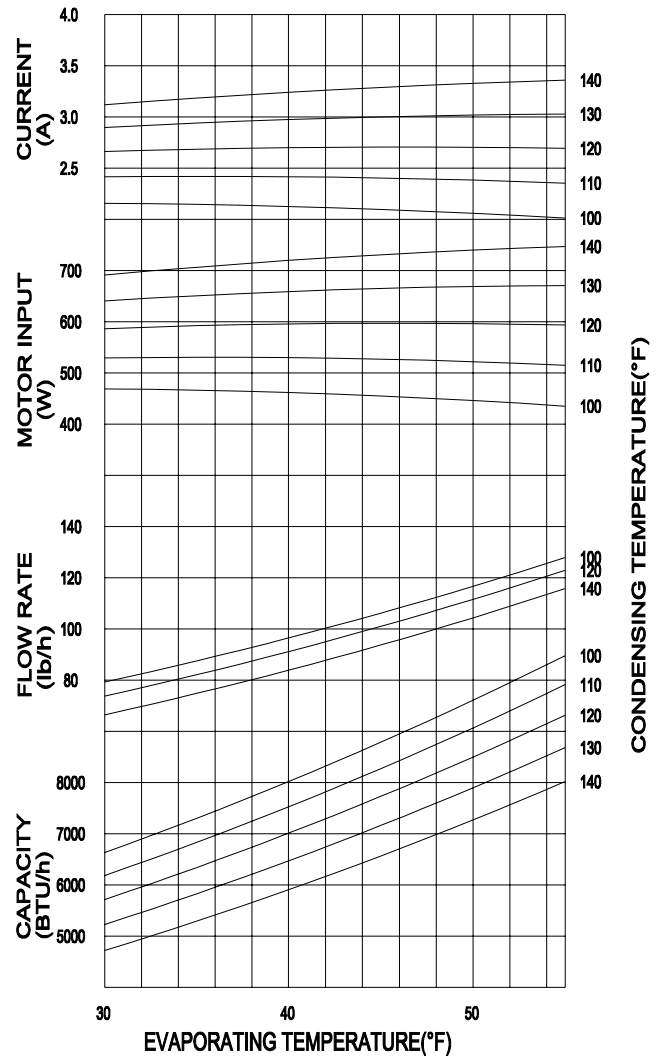
Condensing Temp.	149°F	65°C
Return Gas Temp.	95°F	35°C
Discharge Gas Temp.	239°F	115°C
Motor Wire Temp.	266°F	130°C

### Electrical Components

Overload Protector	7100036 or 7100523	
Texas Instrument part #	MRA 98545 or MRA 98967	
Run Capacitor	15 μF/370 VAC	

### <sup>1</sup>Rated @ASHRAE/T Conditions

Evaporating Temp.	45°F	7.2°C
Condensing Temp.	130°F	54.4°C
Return Gas Temp.	95°F	35.0°C
Liquid Temp.	115°F	46.1°C
Ambient Temp.	95°F	35.0°C



### Performance Data @230V

Based on:

Return gas Temp.	95°F	35.0°C
Liquid sub-cooling	15°F	8.3°C
Ambient	95°F	35.0°C

#### COND. TEMP.

100°F	110°F	120°F	130°F	140°F
37.8°C	43.3°C	48.9°C	54.4°C	60°C

#### EVAP. TEMP.

35° F 1.7°C	Btu/hr	7300	6830	6340	5825	5290
	Watts	466	531	592	651	707
	Amperes	2.1	2.4	2.7	2.9	3.2

45° F 7.2°C	Btu/hr	8785	8270	7725	7160	6565
	Watts	455	527	567	665	731
	Amperes	2.1	2.4	2.7	3.0	3.3

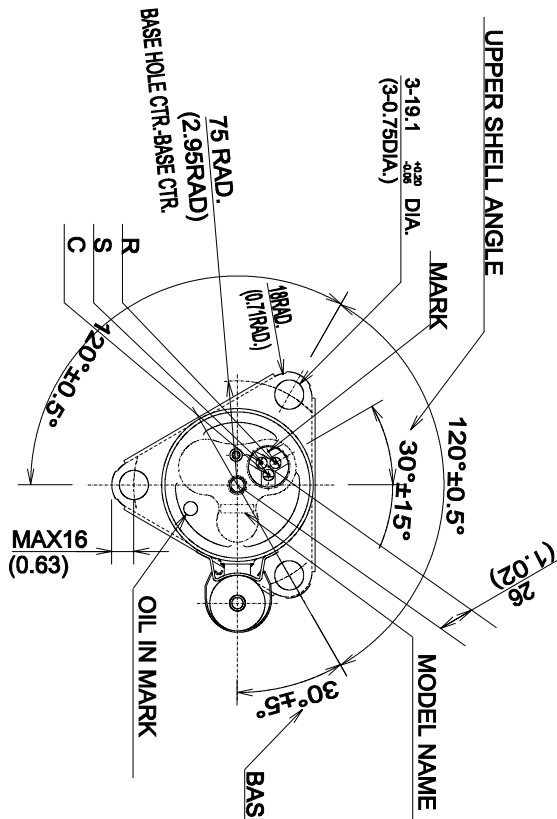
55° F 12.8°C	Btu/hr	10475	9910	9310	8680	8015
	Watts	435	515	593	671	747
	Amperes	2.0	2.4	2.7	3.0	3.4

BTU 7,000

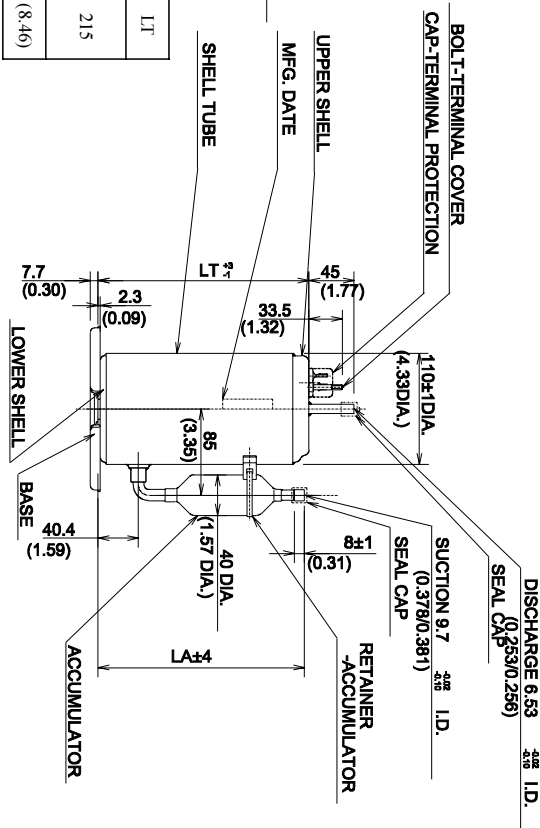
# 2R11S3R236A-6A

208/230 V, 60 Hz R-22

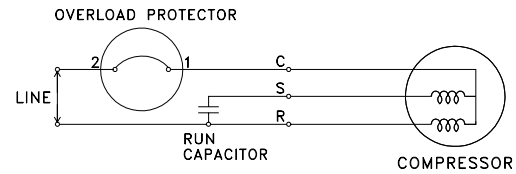
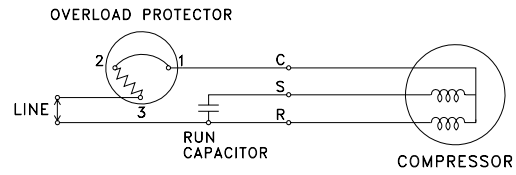
BTU 7,000



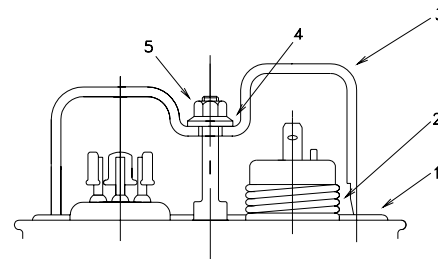
LA	205	LA	(8.07)
LT	215	LT	(8.46)



## WIRING DIAGRAM



## COMPRESSOR ACCESSORIES



Accessories	Part Number
1 Gasket-Terminal Cover	7070620U
2 Spring-OLP hold down	7041200
3 Terminal Cover	7070222U
4 Gasket-Nut	7070621U
5 Nut-Terminal Cover	7080300
Grommet	7070817

## COMPRESSOR MOUNTING

