

Panasonic Industrial Company

Air Conditioning Department

2R11U126A-6B

115 V, 60 Hz R-22

2R11U126A-6B

Application	Cooling (C) / Heating (H)	
Ref. Charge Limit (C/H)	16.4 oz.	465 g
	(C) 19.4 oz.	550 g
Evap. Temp. Range (C/H)	5°F to 53.6°F	-15°C to 12°C
	(C) 14°F to 53.6°F	-10°C to 12°C
Specification Number	SC-52171822-A	

Rated Performance¹

Capacity	7,280 Btu/hr
Motor Input	660 Watts
Current	6.1 Amperes
E.E.R.	11.03 Btu/hr/ W

Compressor Data

Pump Type	Rotary	
Displacement	10.3 cc/rev	
Oil	ATMOS M60 or equivalent	
Oil Charge (Precharged)	8.8 fl. oz.	260 cc
Net Weight	19.8 lb	9.0 kg

Motor Data

Motor Type	Permanent Split Capacitor	
Locked Rotor Amperes	40 A at 120 V	
Winding Resistance	Main: 1.130Ω, Aux: 2.712Ω	
Max. Continuous Current ²		

Maximum Operating Conditions

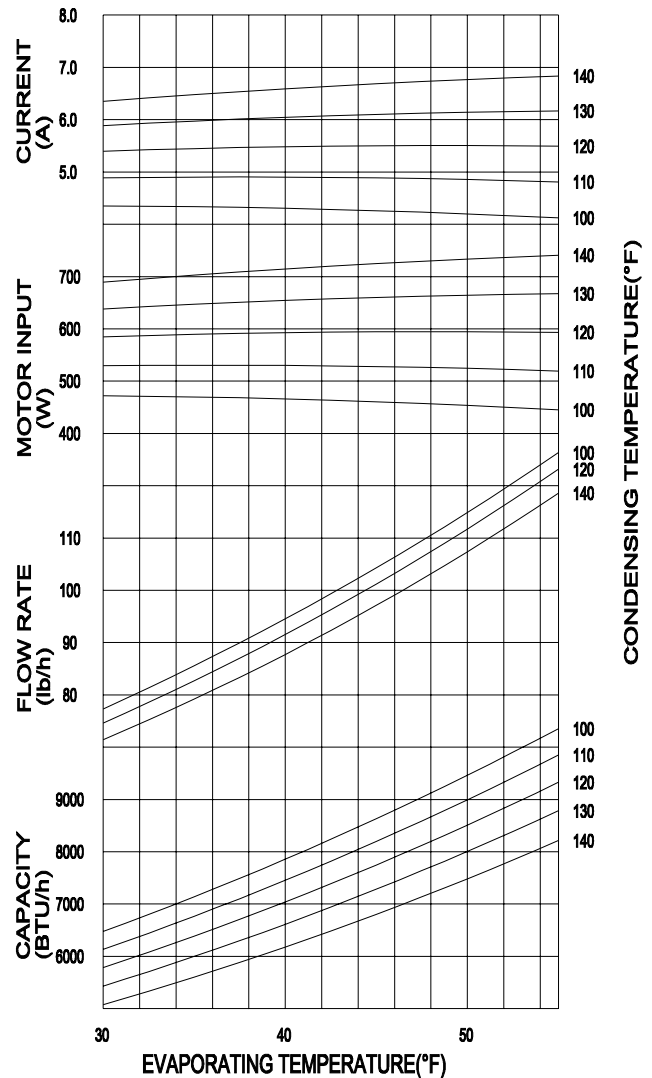
Condensing Temp.	149°F	65°C
Return Gas Temp.	95°F	35°C
Discharge Gas Temp.	239°F	115°C
Motor Wire Temp.	266°F	130°C

Electrical Components

Overload Protector	7100517
Texas Instrument part #	MRA98705
Run Capacitor	35 μF/230 VAC

¹Rated @ASHRAE/T Conditions

Evaporating Temp.	45°F	7.2°C
Condensing Temp.	130°F	54.4°C
Return Gas Temp.	95°F	35.0°C
Liquid Temp.	115°F	46.1°C
Ambient Temp.	95°F	35.0°C



Performance Data

Based on:

Return gas Temp.	95°F	35.0°C
Liquid sub-cooling	15°F	8.3°C
Ambient	95°F	35.0°C

COND. TEMP.

100°F	110°F	120°F	130°F	140°F
37.8°C	43.3°C	48.9°C	54.4°C	60°C

EVAP. TEMP.

35° F 1.7°C	Btu/hr	7138	6765	6384	5996	5599
	Watts	470	530	590	647	703
	Amperes	4.3	4.9	5.4	6.0	6.5

45° F 7.2°C	Btu/hr	8630	8194	7745	7280	6801
	Watts	461	528	594	660	725
	Amperes	4.3	4.9	5.5	6.1	6.7

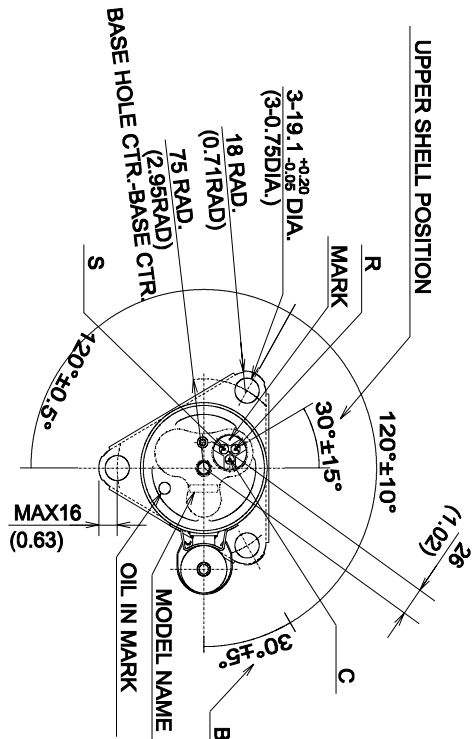
55° F 12.8°C	Btu/hr	10352	9849	9326	8780	8212
	Watts	445	519	593	667	741
	Amperes	4.1	4.8	5.5	6.2	6.8

BTU 7,000

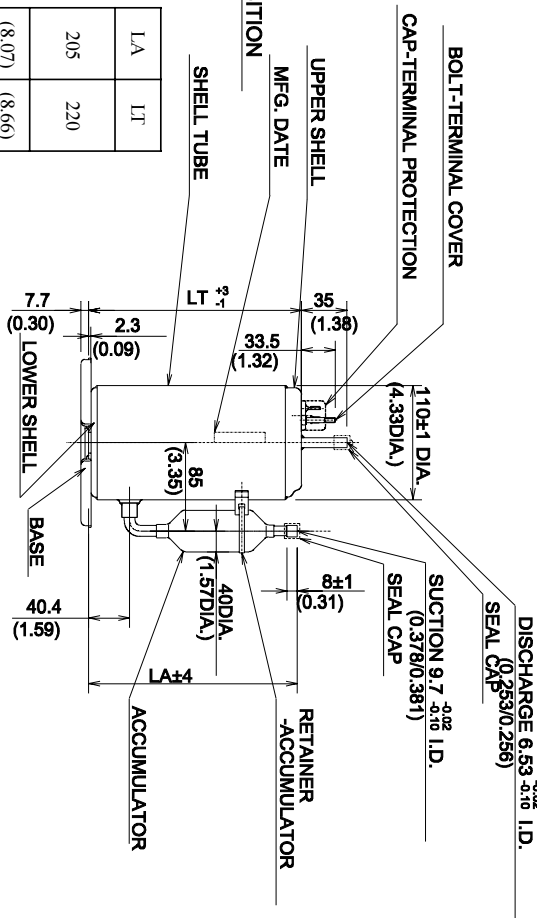
2R11U126A-6B

115 V, 60 Hz R-22

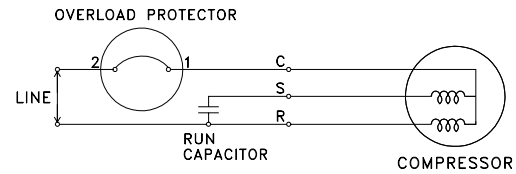
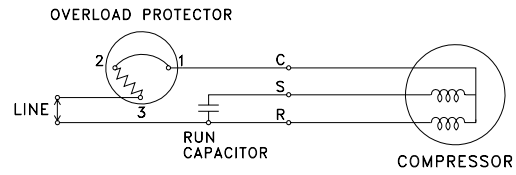
BTU 7,000



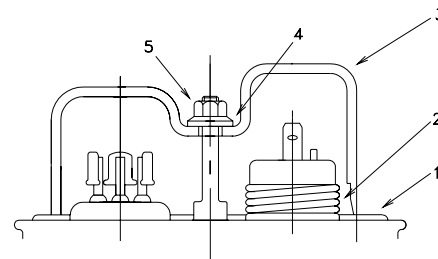
LA	LT
205 (8.07)	220 (8.66)



WIRING DIAGRAM



COMPRESSOR ACCESSORIES



Accessories	Part Number
1 Gasket-Terminal Cover	7070620U
2 Spring-OLP hold down	7041200
3 Terminal Cover	7070222U
4 Gasket-Nut	7070621U
5 Nut-Terminal Cover	7080300
Grommet	7070817

COMPRESSOR MOUNTING

