

Panasonic Industrial Company

Air Conditioning Department

5RS084UAB21

115V, 60Hz R-410a

5RS084UAB21

Application	Cooling (C) / Heating (H)	
Ref. Charge Limit (C/H)	22.4 oz.	635 g
	(C)	26.5 oz. 750 g
Evaporating Temp Range (C/H)	5°F to 53.6 °F	-15°C to 12°C
	(C)	14°F to 53.6 °F -10°C to 12°C

Rated Performance at 115 V

Capacity	8,190 BTU/h
Motor Input	850 Watts
Current	7.65 Amperes

Compressor Data

Pump Type	Rotary	
Displacement	8.51 cm ³ /rev.	
Oil	FV50S (PVE) or equivalent	
Oil Charge (Precharged)	10.2 fl. Oz.	300 cm ³
Net Weight	20.6 lb.	9.30 kg

Motor Data

Motor Type	Permanent Split Capacitor	
Locked Rotor Amperes	42 A at 132 V	
Winding Resistance ²	Main: ___Ω, Aux: ___Ω	
Max. Continuous Current ²	_____	

Maximum Operating Conditions

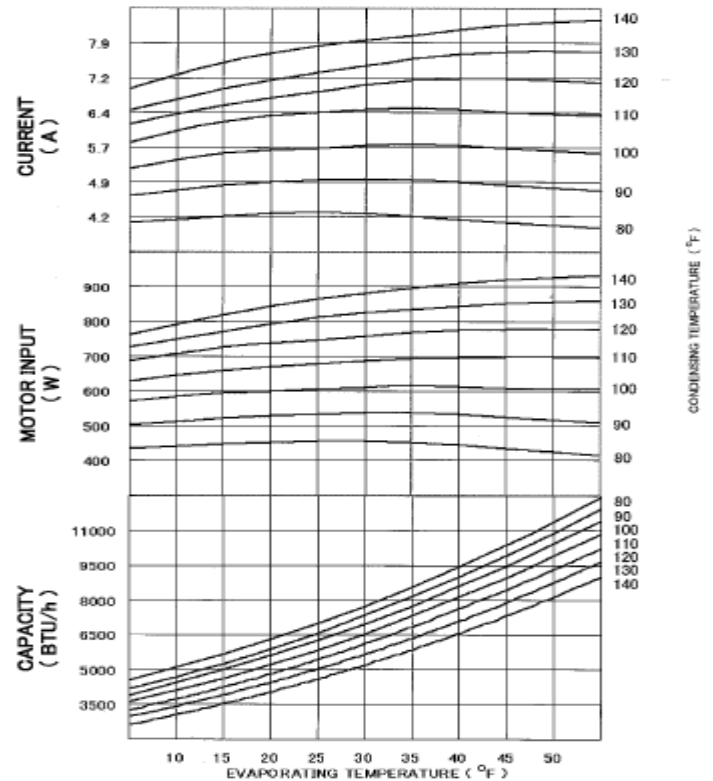
Condensing Temp.	149°F	65°C
Return Gas Temp.	95°F	35°C
Discharge Gas Temp.	239°F	115°C
Motor Wire Temp.	266°F	130°C

Electrical Components

Overload Protector	7100557
Texas Instrument part#	MRA 98890-9200
Run Capacitor	40 μF / 230 V

Rated at ASHRAE/T Conditions

Evaporating Temp.	45°F	7.2°C
Condensing Temp.	130°F	54.4°C
Return Gas Temp.	95°F	35.0°C
Liquid Temp.	115°F	46.1°C
Ambient Temp.	95°F	35.0°C



Performance Data

Based on Voltage 115 V, Frequency 60 Hz

Return Gas	65°F	18.3°C
Liquid Sub Cooling	15°F	-9.4°C
Ambient, Air Over 1m/s	95°F	35.0°C

COND. TEMP.

100°F	110°F	120°F	130°F	140°F
37.8°C	43.3°C	48.9°C	54.4°C	60°C

EVAP. TEMP.

35°F 1.7°C	Btu/h	7725	7308	6845	6355	5862
	Watts	615	692	766	835	896
	Amperes	5.7	6.5	7.1	7.6	8.1

45°F 7.2°C	Btu/h	9440	8950	8439	7900	7332
	Watts	607	698	778	852	921
	Amperes	5.6	6.4	7.1	7.7	8.3

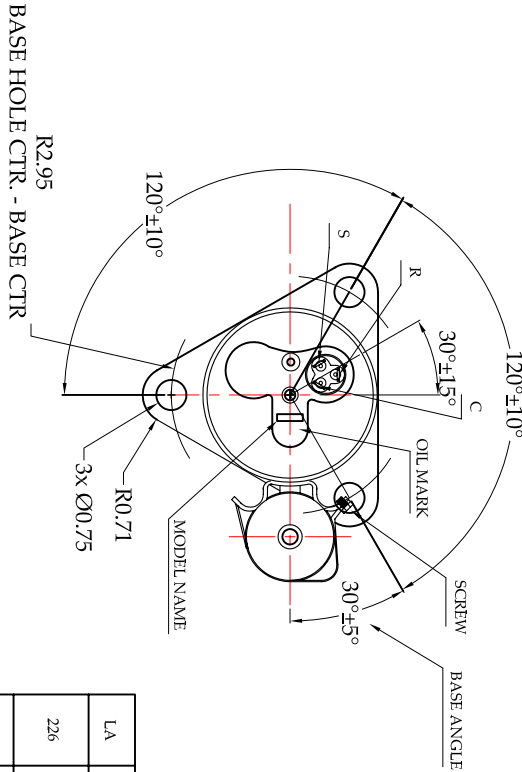
55°F 12.8°C	Btu/h	11428	10843	10227	9661	8999
	Watts	604	695	778	860	932
	Amperes	5.5	6.3	7.1	7.7	8.4

5RS084UAB21

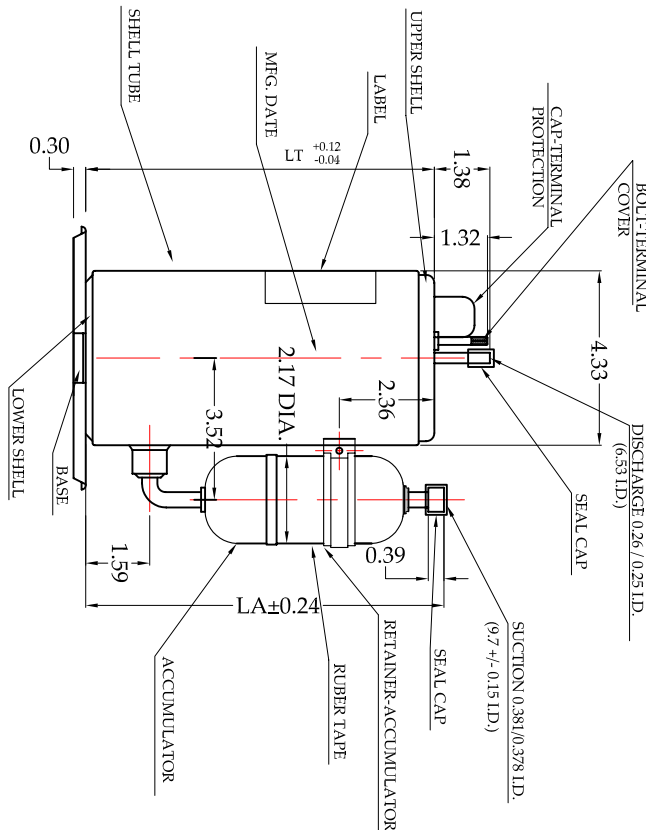
115 V, 60 Hz

R410A

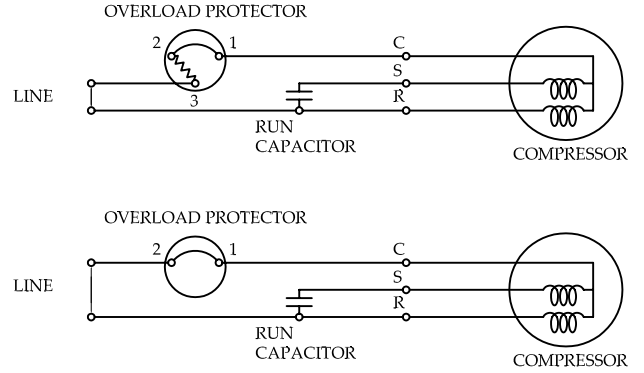
BTU 8,000



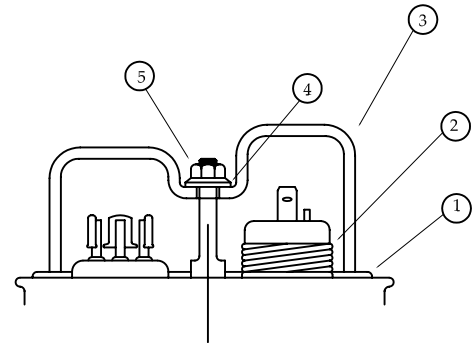
LA	226	(8.89)
LT	220	(8.66)



WIRING DIAGRAM

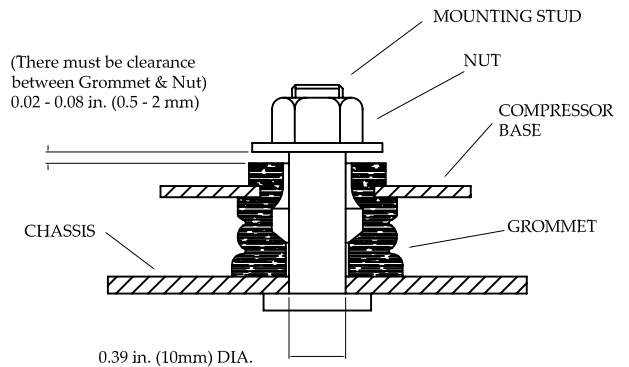


COMPRESSOR ACCESSORIES



ACCESSORIES	PART NUMBER
1 Gasket-Terminal Cover	7070620U
2 Spring - OLP hold down	7041200
3 Terminal Cover	7070222U
4 Gasket - Nut	7070621U
5 Nut - Terminal Cover	7080300
Grommet	7070817

COMPRESSOR MOUNTING



This document sets forth certain operational parameters and conditions for operation of this product. If this product is operated outside of the parameters and conditions stated herein, buyer assume sole and full responsibility and shall indemnify seller with respect to all product failures, and all the consequences thereof. Operation of the product outside of the parameters and conditions specified herein shall serve to invalidate all seller warranties, if any, with respect to the product. Use this document as reference only. For specifications please contact Panasonic's engineering department.